



# Republic of Niger

## Final Implementation Plan

### November 2014

**TABLE OF  
CONTENTS**

Section 1: General information	3
Section 2: Current drought situation	4
Section 3: Description of intervention activities	8
Section 4: Summary analysis	22
Section 5: Standard operating procedures	23
Annex 1: Disaster Management Mechanism Oranigramme	27
Annex 2: Revised budget	28

**Instructions:**

Please complete the Final Implementation Plan (FIP) providing as much detail as possible. Use your Operations Plan to assist you in completing FIP. Attach any relevant documents as Annexes. As per ARC Guidelines, the FIP must be submitted at least one month before the pay-out date. It can be submitted as soon as countries are notified by ARC Ltd. that a payout is likely. Countries may consult with the ARC Secretariat before submitting their FIPs.

**01  
GENERAL  
INFORMATION**

Name of Country:	Republic of Niger
Contact Person for Final Implementation Plan (FIP):	Madame KANE AICHATOU, PRIME MINISTER CHIEF OF STAFF
Bank account details for receiving payout:	Disaster Contingency Funds: Fonds Commun des Donateurs du Dispositif National

Coverage period:	Year: 2014 Season: 2014-2015
Expected Payout amount as of	3.3 million USD (1 650 000 000 CFA)
Expected payout date:	January 2015

## 02 CURRENT DROUGHT SITUATION

Step 1:  
Using the best  
information  
available,  
describe  
the current  
drought  
situation by  
answering  
the following  
questions.

1.1 Describe the Early Warning activities currently taking place at the national and regional levels. How are the country's EW systems describing the current rainfall deficit?

A strike situation observed by the rural development agents did not allow normal operation of the national early warning system this year. Consequently, information about the evolution of the season could not be collected, analyzed and distributed as required. Furthermore the interpretation of satellite images enabled to appreciate the situation in the country. Thus, FewNet and AfricaRiskView were able to report deficits observed here as well as their impact on agricultural production.

Indeed the first useful rains under the 2014 crop year were recorded during the third decade of April in the agricultural zone of the country. These rainfalls have helped make partial planting of millet in some areas. Subsequently, they continued more or less regularly in all regions. However, early sowing took place in Diffa in the third decade of June and the third decade of July for the Agadez region. Long periods of lack of rainfall of 10 to 50 days were observed which aborted or delayed planting. Strong winds have also buried emerging millet crops in some places resulting in reseeded.

Have the organizations involved in disaster management for drought met? When are they scheduled to meet again? Have you developed a consensus on preparedness and planning for disaster mitigation?

The structures responsible for drought management are made up of Prime Minister Cabinet, Cabinet of the Presidency, main structures of humanitarian aid as well as representatives of technical ministries met in October to discuss developments in agricultural season and developed a preliminary support plan in 2014.

1.2 Has a needs assessment exercise been carried out before completing this FIP?  
ww[ X ] Yes [ ] No

If yes, were the findings consensual (consensus between major governmental and non-governmental agencies) and were the findings consistent with recent food security trends and earlier food security reports related to the drought?

Through field missions assigned by partners and other state services, an assessment of the situation was made on the impact of rainfall deficit observed in the impacted areas and their impact on food security of the population. As part of the National device for Crises and Disaster Management, all decisions are made by consensus at meetings of the broad-based Consultative Committee (CEC) whose meetings are held on a weekly basis. If not, when is it planned for? NA

How will the needs assessment be funded? NA

## 02 CURRENT DROUGHT SITUATION

1.3 Based on your EW processes, specify the regions/provinces that are currently impacted or expected to be impacted by the drought. Indicate the estimated number of people affected and the source of that information (e.g. Needs Assessment, ARV, etc.)

Admin Level 1: Region/Province	Admin Level 2: District	Total Population	Estimated number of people affected
Maradi	Mayahi	559 009	308 696
	Madarounfa	714 804	267 313
	Aguie	406 650	222 913
	Dakoro	683 550	206 653
	Guidan Roudji	524 406	179 916
	Tessaoua	516 586	171 756
Zinder	Magaria	929 625	485 106
	Matameye	401 012	172 854
	Goure	370 406	164 406
Dosso	Dogondoutchi	640 431	109 181
	Loga	176 673	58 342
Tillabéry	Tera	663 377	171 756
Diffa	Diffa	2 877 204	247 879
	N'guigmi		28 574
	Maine Soroa		81 623
<b>TOTAL</b>		<b>7 536 856</b>	<b>2 877 204</b>

SOURCE: AFRICARISKVIEW (ARV)

## 02 CURRENT DROUGHT SITUATION

1.4 For each Region/Province describe the planned or expected response. If the needs assessment exercise has not yet been carried out, is it possible to please give a rough estimate of these figures (from any major assessment/survey carried out by Gov or partners such as WFP or from the EW monitoring system). Once it is carried out you will be asked to resubmit the FIP with updated information.

Admin Level 1: Region/Province	Activity as of: (15 January)	Anticipated Response	
		Min	Max
Maradi	Number of people in need of supplementary feeding	79 677	87 644
	Number of people in need of therapeutic feeding	23 154	25 469
	Number of people in need of school feeding	4 235	4 235
Zinder	Number of people in need of supplementary feeding	39 804	43 784
	Number of people in need of therapeutic feeding	9 185	10 104
	Number of people in need of school feeding	3225	3225
Dossou	Number of people in need of supplementary feeding	19 120	21 032
	Number of people in need of therapeutic feeding	4 412	4 853
	Number of people in need of school feeding	2 932	2 932
Tillabéry	Number of people in need of supplementary feeding	15 523	17 075
	Number of people in need of therapeutic feeding	3 582	3 940
	Number of people in need of school feeding	524	524
Diffa	Number of people in need of supplementary feeding	22 237	24 461
	Number of people in need of therapeutic feeding	5 131	5 644
	Number of people in need of school-feeding	4 532	4 532

**02  
CURRENT  
DROUGHT  
SITUATION**

1.5 List all the interventions that you anticipate will be implemented during this specific drought episode as part of the larger, country-wide drought response. Indicate which of these interventions you might use an ARC pay out to help fund.

Intervention name	Period ( month)	Period ( month)	Region/National	Intervention type (select from below list)
Conditional Transfer	2	2	Departmental	A
School Canteen	5	5	Communal	H

Intervention Types			
A	Cash Transfer - conditional	G	Distribution of food stamps, vouchers, coupons
B	Cash Transfer - unconditional	H	Nutrition supplement
C	Cash Transfer – for work	I	Seed distribution
D	Food distribution –need based	J	Water trucking
E	Food distribution – for work	K	Borehole development
F	Supplementary feeding	L	Livestock Feeding

## 03 DESCRIPTION OF INTERVENTION ACTIVITIES

Step 2:  
Describe in detail the intervention(s) that you anticipate funding using an ARC pay out. You must complete steps 2.1 -2.12 for every intervention for which you might use ARC Funds.

### Intervention 1: Conditional transfer

2.1 Was this intervention originally proposed in the Operations Plan? [ X ] Yes [ ] No

If you select 'No' above, please complete the 'New Intervention Template' and attach as an annex

2.2 Provide a brief description of the intervention. If the anticipated implementation of the intervention varies from that described in the OP, please explain here the differences and why it has changed.

Conditional transfer operations are conducted between November and February at the latest. The objective is to enable targeted households to be be entitled to an amount of 1300 CFA per day over a period of 25 days of

work per month. The financial amount distributed is FCFA 32 500 per month per target household) for 2 months. Conditional transfer operations are selected for the benefits they provide to vulnerable populations. At the same time they increase people's incomes, restore the environment (development of ponds, reinforcement of dunes, processing of koris, land recovery) and fight against temporary migration by setting the populations concerned (taking care not to deprive people of a survival strategy and ultimately strengthening their resilience). National NGOs involved in the programme implementation are selected based on their capacity and familiarity with the areas targeted



## 03

### DESCRIPTION OF INTERVENTION ACTIVITIES

2.3 List the provinces/districts that you anticipate will receive assistance via this intervention under the current drought emergency and identify the estimated number of targeted beneficiaries for this intervention activity, if known.

Admin Level 1: Region/Province	Admin Level 2: District	Total Population	Targeted Beneficiaries
Maradi	Mayahi	559 009	2146
	Madarounfa	714 804	711
	Aguie	406 650	405
	Dakoro	683 550	1523
	Guidan Roudji	524 406	1246
	Tessaoua	516 586	1592
Zinder	Magaria	929 625	2507
	Matameye	401 012	399
	Goure	370 406	1662
Dosso	Dogondoutchi	640 431	1938
	Loga	176 673	2077
Tillabéry	Tera	663 377	1731
TOTAL		6 586 529	16 422

2.4 List the expected partner organizations to be involved with this drought emergency and verify their contact information.

Name of Organization Responsible	Name of contact at organization	Role and responsibility (EW, M&E, food distribution)	Telephone number	Email address
Permanent Secretariat	Mahamane Goni Boulama	National Supervisor	0022796978436	goniboulamamahaman@yahoo.fr
Food Crisis Unit	Yabilan Mahamane	Coordinator	0022796926810	Yabilan1958@gmail.com

## 03

### DESCRIPTION OF INTERVENTION ACTIVITIES

2.5 If possible, please include a detailed organogram for this planned intervention. This is a graphical representation of how all the players involved in this intervention relate and/or work together. Please keep in mind coordination, Regional/National organizations, and technical/administrative roles. See Annex 1

2.6 Estimate the Unit Cost (cost per beneficiary) to undertake this activity for 1 month? Where possible, please update this calculation based on current costs.

2.7 Estimate the cost to undertake this intervention activity for one (1) month.

The financial amount distributed is F.CFA 32 500 per month and per target household

The operational cost is F.CFA 7 873.5 per month and per target household

The total unit cost is F.CFA 40 373.5 per household, or \$80.75

Admin 1 level: Province/Region	Admin 2 level: District	# of targeted beneficiaries	Number of Households	Total cost for 1 month (targeted * unit cost)
Maradi	Mayahi	308 696	2146	69 745 500
	Madarounfa	267 313	1523	48 497 500
	Aguie	222 913	1246	40 495 000
	Dakoro	206 653	1592	51 740 000
	Guidan Rounджи	179 916		
	Tessaoua	171 756		
Zinder	Magaria	485 106	2507	81 477 500
	Matameye	172 854	1662	54 015 000
	Goure	164 406		
Dosso	Dogondoutchi	109 181	1938	62 985 000
	Loga	58 342	2077	67 502 000
Tillabéry	Tera	171 756	1731	56 257 500
<b>Totals</b>		<b>2 877 204</b>	<b>16422</b>	<b>533 500 000</b>

Calculate the cost of covering the targeted population for the entire ARC implementation period.

The average Household Size is seven(7) persons. The monthly remuneration per household is F.CFA 32 500

Total cost of covering activity for the ARC implementation period

Note: total cost for 1 month\* ARC implementation period [2]  
F.CFA 1 326 000 000

## 03 DESCRIPTION OF INTERVENTION ACTIVITIES

2.8 Describe the flow of funds from the ARC payout. For instance, indicate how the funding will be transferred from the National account identified in the OP to the implementing agencies. Please be as specific as possible.

Transfer from the main account of the National Food Crises Prevention and Mitigation Mechanism (DNPGCCA) to the accounts of operators who will be selected for the implementation of the intervention (cf. the Niger Operational Plan)

2.9 If the targeting strategy for this intervention varies from that described in the OP, please explain for /per each new activity. For instance, what was the basis for targeting the population: an assessment, surveys, need assessment?

What are the planned dates for the targeting exercise?  
December

What is the estimated cost of this targeting activity?  
5% of the total amount of the activity

Who will fund the targeting of this intervention?  
Implementers. The costs are taken into account in the amount of activity with ARC funds

2.10 Please estimate the procurement requirements and list the possible sources for this procurement

Item	Unit	# of units needed to support the targeted beneficiaries (from step 2.3) for one month	Source(s)	Estimated date procurement process will	Estimate time (in days) to procure item
NA					

2.11 Please refer back to your Operations Plan to confirm the M&E arrangements for this intervention activity. Describe any changes in the M&E plan related to this specific drought episode.

The internal monitoring and evaluation system for response activities in case of drought is planned at three levels:

- monitoring the implementation of interventions will be carried out by the monitoring and evaluation unit of the CCA / GC;
- evaluation of intervention impacts on the food situation will be carried out by the "monitoring" unit of the SAP / PC;
- internal financial control is exercised by the Chief Financial Officer DNPGCCA.

This internal monitoring will be based on the organization of a decentralized system that will empower every level (municipal, district, regional) of DNPGCCA to collect and analyse data. Evaluation and external audit will be carried out by the government at the end of operations to evaluate the effectiveness and impact of interventions and the proper management of financial resources.

Each actor involved in the operations must also organize a monitoring system for their interventions on the ground. These players will also establish a monthly financial and operational report on their own actions and agree to present it to DNPGCCA for a complete analysis. The DNPGCCA is responsible for consolidating monthly reports as well as the final report and submit them to ARC Agency.

## 03

### DESCRIPTION OF INTERVENTION ACTIVITIES

2.12 Please list the risks and assumptions specific to this drought episode that may impact the implementation of this intervention.

Potential risks include:

- The start-up delays in transfer operations due to operational implementation delays;
- Non-compliance with operational turnaround as provided for in the agreements signed between Niger and the ARC;
- Unavailability of food markets despite the money transfers;
- Lack of appropriate structures and strong partners responsible for implementation with adequate resources; and,
- The inability to identify adequately the needy beneficiaries

## 03 DESCRIPTION OF INTERVENTION ACTIVITIES

### Intervention 2: School Feeding

It allows children who have no family support to continue their education and brings stability to their parents. This will only apply to canteens under state control and will last five (5) months (January - May).

#### 2.1 Was this intervention originally proposed in the Operations Plan? [Yes]

If you select 'No' above, please complete the 'New Intervention Template' and attach as an annex

#### 2.2 Provide a brief description of the intervention. If the anticipated implementation of the intervention varies from that described in the OP, please explain here the differences and why it has changed.

This operation will take place over a five-month period (January - May).

School canteen will be open or strengthened in the most vulnerable areas. Food will be purchased in local markets, carried by local trucks and managed by the system put in place by the State. This activity will be coordinated by the Ministry for Education.

#### 2.3 List the provinces/districts that you anticipate will receive assistance via this intervention under the current drought emergency and identify the estimated number of targeted beneficiaries for this intervention activity, if known.

Admin Level 1: Region/Province	Admin Level 2: District	Number of pupils
Maradi	Mayahi	4 235
	Madarounfa	
	Aguie	
	Dakoro	
	Guidan Roundji	
	Tessaoua	
Zinder	Magaria	3 225
	Matameye	
	Goure	
Dosso	Dogondoutchi	2 932
	Loga	
Tillabéry	Tera	524
Diffa	Diffa	4 532
	N'Guigmi	
	Maine Soroa	
TOTAL		15 448

## 03

### DESCRIPTION OF INTERVENTION ACTIVITIES

2.4 List the expected partner organizations to be involved with this drought emergency and verify their contact information.

Name of Partner Organization	Name of contact at organization	Role and responsibility (EW, M&E, food distribution)	Telephone number	Email address
National School Feeding	N'goila SIDIKOU	Director	0022796537107	oungoila@yahoo.fr
Permanent Secretariat	Mahamane Goni Boulama	National Supervisor	0022796978436	goniboulamamahaman@yahoo.fr
Food Crisis Unit	Yabilan Mahamane	Coordinator	0022796926810	Yabilan1958@gmail.com

2.5 If possible, please include a detailed organogram for this planned intervention. This is a graphical representation of how all the players involved in this intervention relate and/or work together. Please keep in mind coordination, Regional/National organizations, technical/administrative roles

The implementation will be carried out by the decentralized structures of Regional Education Directorates, School Management Committees (SMCs) and carriers. See annex 1

2.6 Estimate the Unit Cost (cost per beneficiary) to undertake this activity for 1 month? This cost. Where possible, please update this calculation based on current costs.

The financial amount per pupil is F.CFA 3 623.4 per month

The financial amount for expenses is F.CFA 570.8 per month and per pupil

The total unit cost is F.CFA 4 194.32 per household, or \$8.3

## 03

### DESCRIPTION OF INTERVENTION ACTIVITIES

2.7 Estimate the cost to undertake this intervention activity for one (1) month.

Admin 1 level: Province/Region	Admin 2 level: District	# of targeted beneficiaries	Total cost for 1 month (targeted * unit cost)
Maradi	Mayahi	4 235	17 762 945
	Madarounfa		
	Aguie		
	Dakoro		
	Guidan Roudji		
	Tessaoua		
Zinder	Magaria	3 225	13 527 682
	Matameye		
	Goure		
Dosso	Dogondoutchi	2 932	12 297 746
	Loga		
Tillabéry	Tera	524	2 197 824
Diffa	Diffa	4 532	19 008 658
	N'guigmi		
	Maine Soroa		
Totals	Totals	15 448	64 797 855

Calculate the cost of covering the targeted population for the entire ARC implementation period.  
Total cost of covering activity for the ARC implementation period

Note: total cost for 1 month\* ARC implementation period [5 months]  
F.CFA 323 974 275

**03  
DESCRIPTION OF  
INTERVENTION  
ACTIVITIES**

2.8 Describe the flow of funds from the ARC payout. For instance, indicate how the funding will be transferred from the National account identified in the OP to the implementing agencies. Please be as specific as possible.

Consultation by direct agreement for purchases of food for school canteens  
Transfer from the main account of DNPGCCA) to the account of operators

2.9 If the targeting strategy for this intervention varies from that described in the OP, please explain for /per each new activity. For instance, what was the basis for targeting the population: an assessment, surveys, need assessment?

What are the planned dates for the targeting exercise?  
Targeting carried out since November 2014

What is the estimated cost of this targeting activity?

Who will fund the targeting of this intervention?  
Targeting was carried out by inspectorates involved out of the national budget

2.10 Please estimate the supply needs (or procurement requirements) and list the possible sources for this procurement

Item	Unit	# of units needed to support the targeted beneficiaries (from step 2.3) for one month	Source(s)	Estimated date procurement process will start	Estimate time (in days) to procure item
Rice	Thousand T	490	Local market	As soon as ARC funds are received	45 days
Cooking oil	Litre	20 000	Local market	As soon as ARC funds are received	45 days
Sugar	Kg	18 000	Local market	As soon as ARC funds are received	45 days
Salt	Kg	500	Local market	As soon as ARC funds are received	45 days

Consultation by direct agreement in respect of purchases of food for school canteens  
NB. Bidding process time-consuming to be implemented in emergency operations



## 03

### DESCRIPTION OF INTERVENTION ACTIVITIES

2.11 Please refer back to your Operations Plan to confirm the M&E arrangements for this intervention activity. Describe any changes in the M&E plan related to this specific drought episode.

The internal monitoring and evaluation system for response activities in case of drought is planned at three levels:

- monitoring the implementation of interventions will be carried out by the monitoring and evaluation unit of the CCA / GC;
- evaluation of intervention impacts on the food security situation will be carried out by the “monitoring” unit of the SAP / PC;
- internal financial control is exercised by the Chief Financial Officer DNPGCCA.

This internal monitoring will be based on the organization of a decentralized system that will empower every level (municipal, district, regional) of DNPGCCA to collect and analyse data. Evaluation and external audit will be carried out by the government at the end of operations to evaluate the effectiveness and impact of interventions and the proper management of financial resources.

Each actor involved in the operations must also organize a monitoring system for their interventions on the ground. These players will also establish a monthly financial and operational report on their own actions and agree to present it to DNPGCCA for a complete analysis. The DNPGCCA is responsible for consolidating monthly reports as well as the final report and submit them to ARC Agency.

2.12 Please list the risks and assumptions specific to this drought episode that may impact the implementation of this intervention.

Potential risks include:

- The start-up delays in the activity due to operational implementation delays;
- Non-compliance with operational turnaround as provided in the agreements signed between Niger and the ARC;
- Unavailability of food markets despite ;
- The inability to have access to school because of insecurity

## 04 SUMMARY ANALYSIS

Step 3:  
Based on the  
intervention  
data collected  
in Step 2, please  
indicate how  
you would  
allocate the  
estimated ARC  
pay out across  
eligible ARC  
interventions

List the interventions that you anticipate funding using the ARC pay out. Using the most recent information from ARV on the size of the pay out, please estimate how you might allocate the ARC funds across the planned intervention activities.

Estimated size of the pay-out as of FIP submission (as indicated in section 1) : USD 3 300 00

Intervention Name (enter ARC-eligible interventions from step 1.5)	Intervention Type (enter intervention types from step 1.5)	Proportion of ARC pay-out allocated to intervention (%)	Amount of estimated ARC Pay-out (USD)
Cash transfer	Cash transfer	64.6	1 067 430 000
Training, material and monitoring	Cash transfer	15.6	258 600 000
School foods	School foods	16.9	279 878 080
Logistical support	Transportation of food, renting of food transit stores	2.3	34 091 920
Monitoring of operations implementation	Monitoring of field operations	0.6	10 000 000
Total			1 650 000 000

3.2 Enter here any additional information on the proposed FIP that you feel is important.

## 05 STANDARD OPERATING PROCEDURES

Standard operating procedures represent a set of tasks that will need to be completed before, during, and after a pay out to ensure that the ARC OP/FIP plans are implemented accordingly and that funding and benefits pass on to beneficiaries within the ARC-defined timelines. These procedures form the basis of any post-pay out audit, so it is important that you think carefully about what is feasible and practical and edit/adjust the table accordingly.

Step 4: Refer to the SOPs developed in the OP and update/edit/make more detailed, based on the current drought episode. Please add additional SOPs to the table, where appropriate.

#	SOP Name	SOP Details	Responsible Officer		Max. turnaround time (days)	Type
Informational and Planning Processes						
01	Monitor food security levels	Intense monitoring of ARV to track severity and deterioration of food security situation	ARC Focal Point	End of October	120	Task
02	Update contact databases	Update existing EW/ DRM contact databases (coordination groups, implementing partners, additional HR resources, etc.)	CCA Coordinator	Mid-		Task
03	Obtain Needs Assessment Results	Work with the group responsible for coordinating the larger country drought response to get results from the needs assessment	Permanent Secretary			Consultation Meeting
04	Inform partners of pay out	Inform implementing partners, county and sub-county structures and existing programme managers (if intervention is scalable) of payout	Permanent Secretary , DNPGCCA			
05	Convene coordination meetings	Convene coordination meetings with all implementing partners to plan the intervention(s)	CCA Coordinator	Early	10	Task

## 05 STANDARD OPERATING PROCEDURES

		Financial Processes				
06	Notification to financial institution to receive ARC funding	Notify the government institution responsible for the receipt of the ARC funding and for the transfer of funds to the implementing partners that a pay out is expected	Permanent secretary			Notification letter/meeting
07	Notification to implementing partners of funds transfer	Inform implementing partner(s) and/or procurement sources of funds transfer and verify the bank details	Permanent secretary			Meeting
08	Funds transfer	Transfer funds to implementing agencies and/or procurement sources	Permanent secretary	January		Consultation meeting
09	Targeting and registration(to be done for each ARC-funded intervention)	Identify additional beneficiaries and update beneficiaries' lists	SAP Coordinator	End of October	30 days	Field Mission
10		Assess completeness of list of beneficiaries in each identified district/county	SAP Coordinator	End of October	30 days	Field Mission
11		Expand field staff to address registration / beneficiary list issues for expanded operations (if scalable operation)				
12	Procurement (to be done for each ARC-funded intervention, where required)	Identify responsible actors for the procurement of goods / supplies	CCA Coordinator	Mid-	15	Selection of Operators
13		Verify that procurement sources and procedures are functional	CCA Coordinator	Mid-	15	Revision of pre-qualified suppliers data base
14		Initiate the procurement process	CCA Coordinator	January	7	Consultation meeting

## 05 STANDARD OPERATING PROCEDURES

15	Verify functionality of existing systems	In case of scalable intervention, verify that existing systems (food transfer distribution, cash transfer systems, etc.) are in place, functional and can handle additional caseload	CCA Coordinator			Task
16	Communication	Define the communication strategy to be used among implementing partners (i.e. weekly meetings, monthly meetings, etc.)	Coordinator in conjunction with decentralized services			Task
18	Monitoring and Evaluation	Identify additional M&E personnel and training needs, if required	ARC Focal Point			Task
		Inform implementing partners of monthly reporting requirements and deadlines	ARC Focal Point	Once a month	300	Drafting report on implementation of field activities
		Submit monthly reports to ARC Secretariat	Permanent Secretary, DNPGCCA	Per month		Drafting report on implementation
		Submit final implementation and financial report to ARC Secretariat	Permanent Secretary, DNPGCCA	End of May	15 days after end of work	Drafting report on implementation of programmed operations as well as the financial report

Step 5: Refer to your OP and please update your ARC Standard Operating Procedure timeline based on the timing of this current drought episode. To do so:

- Add any additional SOPs that are specific to your country mentioned in the step above;
- Replace the numbers in the month column with those months related to your seasonal calendar and ARC insurance contract;
- Either highlight in colour or use "X's" to indicate the month(s) in which the activity occurs.

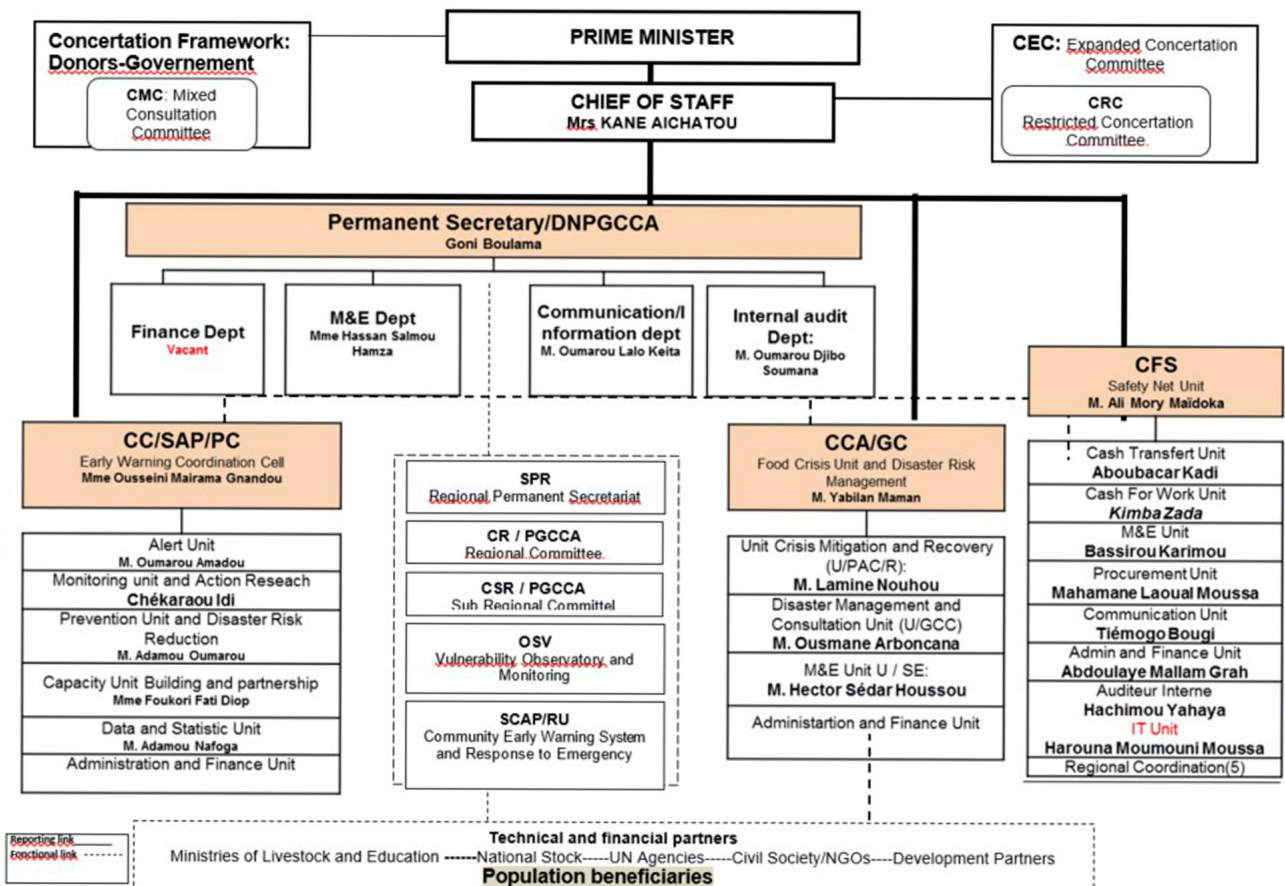
**05**  
STANDARD  
OPERATING  
PROCEDURES

Step 6: Compile an SOP timeline for this activity. Please use the following GANT chart format.

SOP	-1	Payout	Jan	Feb	Mar	Apr	May	+6	+7â	Implementing Agency
	months									
Targeting										Sectorial ministries and local
Cash transfer										CCA/GC
School canteens										School feeding Directorate
Livestock feeding										Livestock Regional

**ANNEX 1:  
DISASTER  
MANAGEMENT  
MECHANISM  
ORGANIGRAMME**

**DISPOSITIF NATIONAL DE PREVENTION ET GESTION DES CATASTROPHES ET DES CRISES ALIMENTAIRES**



**ANNEX 2:  
REVISED  
BUDGET**

Direct operational costs

A. Cash for work	Quantity	Average value (CFA)	Total (CFA)
Cash distributed to households	16 422	65,000	1, 067, 430,000
Training/monitoring			126, 000,000
Small materials			132, 600,000
Total Cash			1, 326, 030,000
B. School feeding	Quantity	Average value (CFA)	Total (CFA)
Rice (tonne)	490	511,000	250, 390,000
Cooking oil (litre)	20,000	1,000	20, 000,000
Sugar (Kg)	18,000	500	9, 000,000
Salt (kg)	500	200	100,000
Food control	490	792	388,080
Total school feeding			279, 878,080
C. Logistical support	Quantity	Value CFA/month	
Food transport to school	600	50000	30, 000,000
Storage rental/ transit stocks			4, 091,920
Monitoring			10, 000,000
Total			44, 091,920
<b>Total</b>			<b>1, 650,000,000</b>